



Virginia Healthcare Workforce Briefs

Indicators from the Bureau of Labor Statistics'
Current Employment Statistics Survey
Series 2: Regional & Sectoral Employment

Series 2, Issue 132

March 2023

Inside this Brief:

Regional Employment	2
Regional Employment Growth	2
Subsector Employment	3
Subsector Employment Growth	4
Region Map	5
About the Data	6

Highlights

- ◆ Data in this series are not seasonally adjusted and exhibit short-term volatility from fluctuations in holidays, weekends, weather and other seasonal factors. Estimates for the most recent month are preliminary.
- ◆ Every region in Virginia enjoyed positive Health Care & Social Assistance (HC&SA) employment growth in February, including three regions that experienced double-digit growth during the month. The Rest of Virginia enjoyed the largest employment gain in February with the creation of 1,700 new HC&SA jobs. Meanwhile, Richmond's HC&SA sector created 1,500 jobs, and Northern Virginia increased HC&SA employment by 1,200. Finally, Hampton Roads added 300 HC&SA jobs during the month.
- ◆ All four of Virginia's HC&SA subsectors also increased employment in February. Nursing & Residential Care Facilities created 2,000 jobs, which represents a one-month annualized growth rate of 38.4%. At the same time, Social Assistance produced 1,600 jobs, which translates into a 27.6% annualized growth rate. As for Ambulatory Health Care Services and Hospitals, these two HC&SA subsectors increased employment by 800 and 300, respectively, during the month.

Data in this report are not seasonally adjusted. Self-employed persons, including health professionals in private practice, are not included.

Data in Brief

Not Seasonally Adjusted*	Employment, in Thousands				Growth Rate, Annualized		
	Feb. 2022	Nov. 2022	Jan. 2023	Feb. 2023	12 Month	3 Month	1 Month
Virginia							
Total Nonfarm	4,002.9	4,145.6	4,077.2	4,102.0	2.5%	-4.1%	7.5%
Health Care & Social Assistance	451.4	470.1	464.5	469.2	3.9%	-0.8%	12.8%
Hampton Roads							
Total Nonfarm	775.7	797.4	783.4	788.1	1.6%	-4.6%	7.4%
Health Care & Social Assistance	93.2	97.6	98.2	98.5	5.7%	3.7%	3.7%
Northern Virginia							
Total Nonfarm	1,505.9	1,564.4	1,541.9	1,546.7	2.7%	-4.4%	3.8%
Health Care & Social Assistance	143.1	150.6	146.8	148.0	3.4%	-6.7%	10.3%
Richmond							
Total Nonfarm	681.4	706.6	699.4	699.8	2.7%	-3.8%	0.7%
Health Care & Social Assistance	84.5	85.9	85.0	86.5	2.4%	2.8%	23.4%
Rest of Virginia							
Total Nonfarm	1,039.9	1,077.2	1,052.5	1,067.4	2.6%	-3.6%	18.4%
Health Care & Social Assistance	130.6	136.0	134.5	136.2	4.3%	0.6%	16.3%

Preliminary estimates are italicized

* Seasonally adjusted data are adjusted by the Bureau of Labor Statistics to account for weather and other seasonal changes. Since the U.S. Bureau of Labor Statistics does not provide seasonally adjusted data at this level, this series uses **non**-seasonally adjusted data exclusively. Seasonal variation may account for some of the variation in time series data. When comparing data in this series to other HWDC series or other publications, it is important to note whether the data reported have been seasonally adjusted.

Regional HC&SA Employment Growth, Level

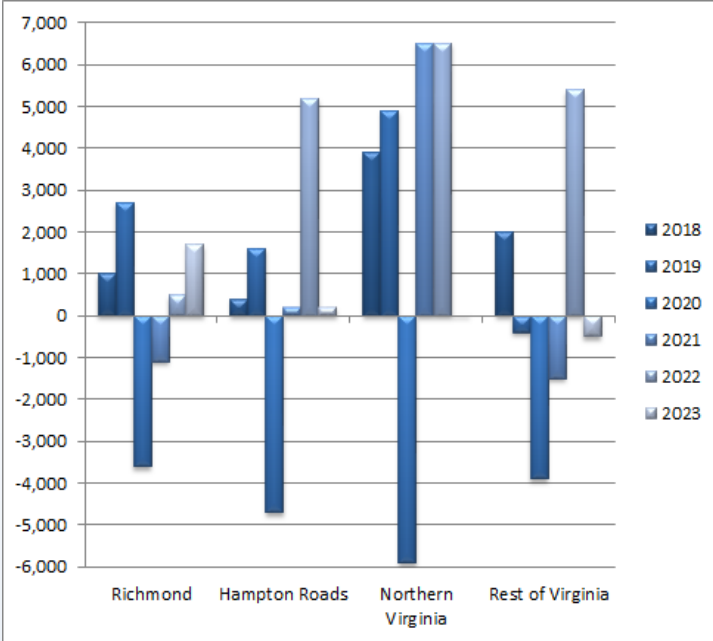


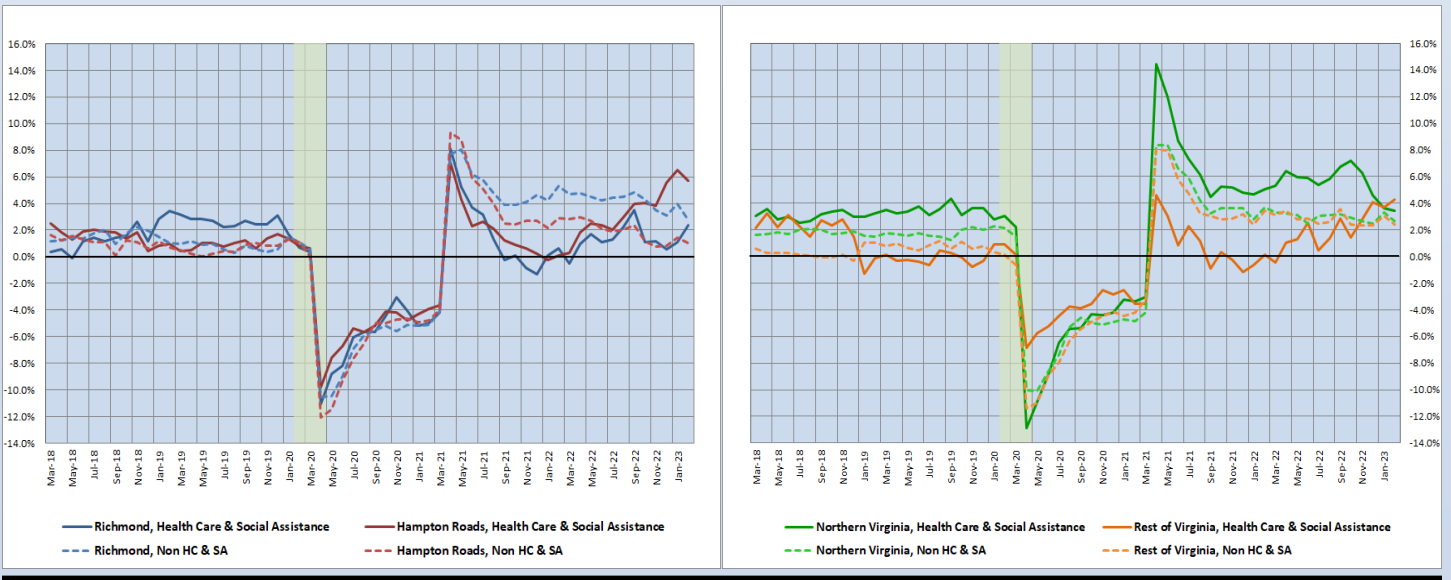
Figure 1: Annual & YTD Change in HC&SA Regional Employment (Not Seasonally Adjusted, Full-Year Change for 2018-2022, Year-to-Date Change for 2023).

According to the preliminary data released on Friday, March 24, 2023, by the U.S. Department of Labor, Bureau of Labor Statistics, Virginia’s Health Care & Social Assistance (HC&SA) sector enjoyed broad-based employment growth across the entire state in February. The largest HC&SA employment gain occurred in the Rest of Virginia, which created 1,700 HC&SA jobs during the month. This gain represents a one-month annualized growth rate of 16.3%. Richmond’s HC&SA sector enjoyed even faster employment growth during the month. With 1,500 new HC&SA jobs created in February, Richmond increased HC&SA employment at a 23.4% annualized rate during the month. Richmond’s HC&SA sector has enjoyed a particularly strong start to the new year: So far in 2023, HC&SA employment in Richmond has increased by 1,700. Meanwhile, Northern Virginia also experienced strong HC&SA employment growth in February with the creation of 1,200 new jobs during the month. This increase translates into a one-month annualized employment growth rate of 10.3%. Finally, Hampton Roads added 300 HC&SA jobs, which translates into a 3.7% annualized growth rate.

Year-Over-Year Regional Employment Growth

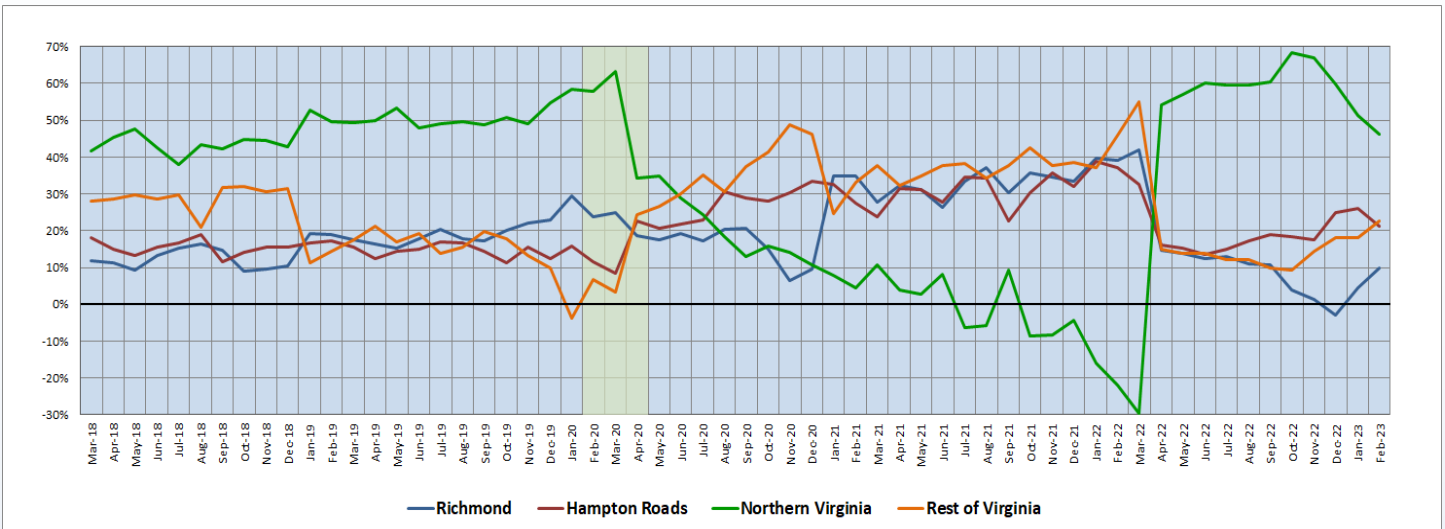
Richmond saw its year-over-year HC&SA employment growth rate more than double in February, increasing from 1.07% to 2.37% during the month. At the same time, the Rest of Virginia experienced a more modest increase to its own year-over-year HC&SA employment growth rate, which rose from 3.70% to 4.29% in February. With this increase, the Rest of Virginia’s year-over-year HC&SA employment growth rate has reached its highest value in nearly two years. As for Virginia’s two other regions, Hampton Roads’ year-over-year HC&SA employment growth rate fell from 6.51% to 5.69% in February, while Northern Virginia saw its own growth rate experience a small decline from 3.60% to 3.42% during the month.

Figure 2: Year-Over-Year Employment Growth (Not Seasonally Adjusted).



Regional Share of 24-Month Employment Growth

Figure 3: Regional Share of Previous 24-Month Employment Growth in Virginia’s HC&SA Sector (Not Seasonally Adjusted).



Richmond’s 24-month HC&SA employment growth share is continuing to rebound strongly, more than doubling in February from 4.50% to 9.80%. The Rest of Virginia’s 24-month HC&SA employment growth share also increased in February from 18.02% to 22.75%. This represents the highest 24-month HC&SA employment growth share for the Rest of Virginia since March 2022. With this increase, the Rest of Virginia’s 24-month HC&SA employment growth share has overtaken the comparable growth share of Hampton Roads, which fell from 26.13% to 21.18% in February. Northern Virginia’s 24-month HC&SA employment growth share also declined during the month from 51.35% to 46.27%, thereby continuing a downward trend that began in Q4 2022.

HC&SA Subsector Employment Growth, Level

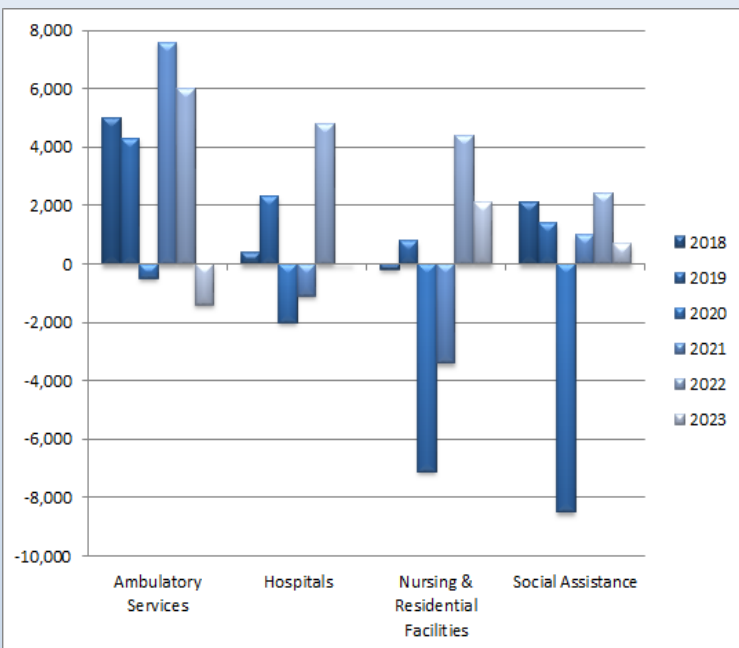


Figure 4: Annual & YTD Change in HC&SA Subsector Employment (Not Seasonally Adjusted, Full-Year Change for 2018-2022, Year-to-Date Change for 2023).

For the first time since last October, every HC&SA subsector in Virginia experienced an increase in employment. This increase was largest in Nursing & Residential Care Facilities, which created 2,000 new jobs in February. This gain represents the fifth consecutive month in which Nursing & Residential Care Facilities have increase employment. Even more impressively, it also represents the largest monthly employment gain in this HC&SA subsector in more than two decades.

Social Assistance also enjoyed a strong month of employment growth with the creation of 1,600 new jobs in February. With this increase, Social Assistance has recovered almost the entirety of the 1,800 jobs that were lost in this HC&SA subsector over the previous three months. Meanwhile, Ambulatory Health Care Services and Hospitals also enjoyed solid, albeit somewhat smaller, employment gains in February. Ambulatory Health Care Services produced 800 new jobs in February, while Hospitals increased employment by 300 during the month.

Distribution of Growth by Subsector

Not Seasonally Adjusted	Employment, in Thousands				Growth Rate, Annualized		
	Feb. 2022	Nov. 2022	Jan. 2023	Feb. 2023	12 Month	3 Month	1 Month
Virginia							
Health Care & Social Assistance	451.4	470.1	464.5	469.2	3.9%	-0.8%	12.8%
<i>Ambulatory Health Care Services</i>	200.8	207.7	203.9	204.7	1.9%	-5.7%	4.8%
<i>Hospitals</i>	105.3	110.5	109.8	110.1	4.6%	-1.4%	3.3%
<i>Nursing & Residential Care Facilities</i>	68.3	72.5	72.8	74.8	9.5%	13.3%	38.4%
<i>Social Assistance</i>	77.0	79.4	78.0	79.6	3.4%	1.0%	27.6%
Hampton Roads							
Health Care & Social Assistance	93.2	97.6	98.2	98.5	5.7%	3.7%	3.7%
<i>Hospitals</i>	21.4	22.5	22.4	22.5	5.1%	0.0%	5.5%
Northern Virginia							
Health Care & Social Assistance	143.1	150.6	146.8	148.0	3.4%	-6.7%	10.3%
<i>Ambulatory Health Care Services</i>	74.1	77.0	75.1	75.5	1.9%	-7.6%	6.6%
<i>Hospitals</i>	26.9	28.6	28.4	28.5	5.9%	-1.4%	4.3%

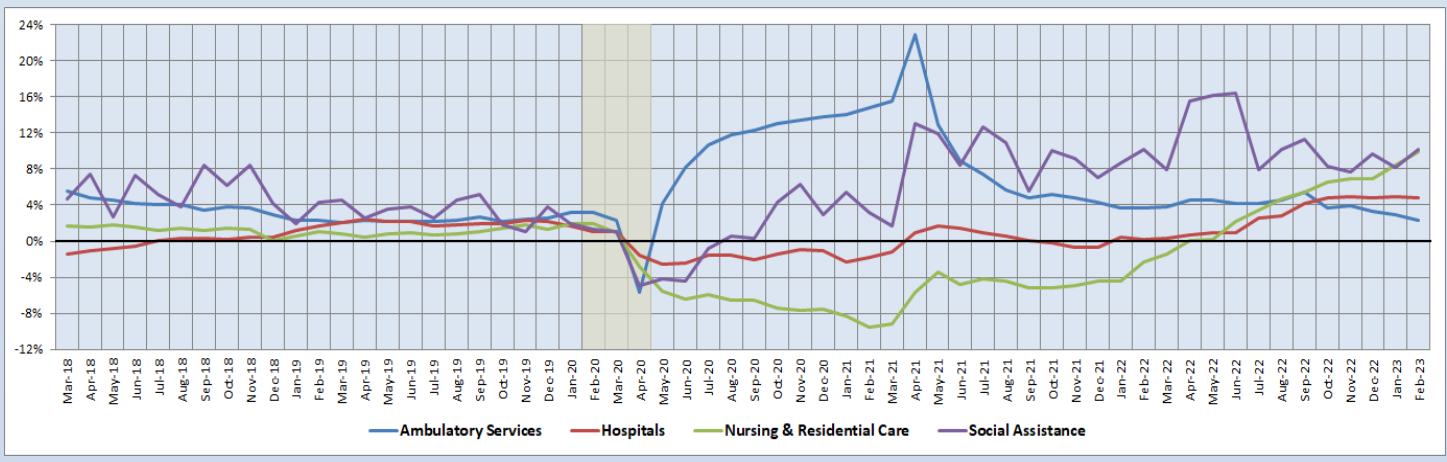
Preliminary estimates are italicized

Both Nursing & Residential Care Facilities and Social Assistance enjoyed incredible employment growth in February. Specifically, Nursing & Residential Care Facilities increased employment at a 38.4% annualized rate in February, while Social Assistance created jobs at a 27.6% annualized rate during the month. The job market for Nursing & Residential Care Facilities has been particularly robust. Nursing & Residential Care Facilities currently have a three-month annualized employment growth rate of 13.3%, and this HC&SA subsector has increased employment by 9.5% over the past 12 months. Both of these growth rates are well above the comparable growth rates for Virginia’s three other HC&SA subsectors.

12-Month Average Employment Growth by Subsector

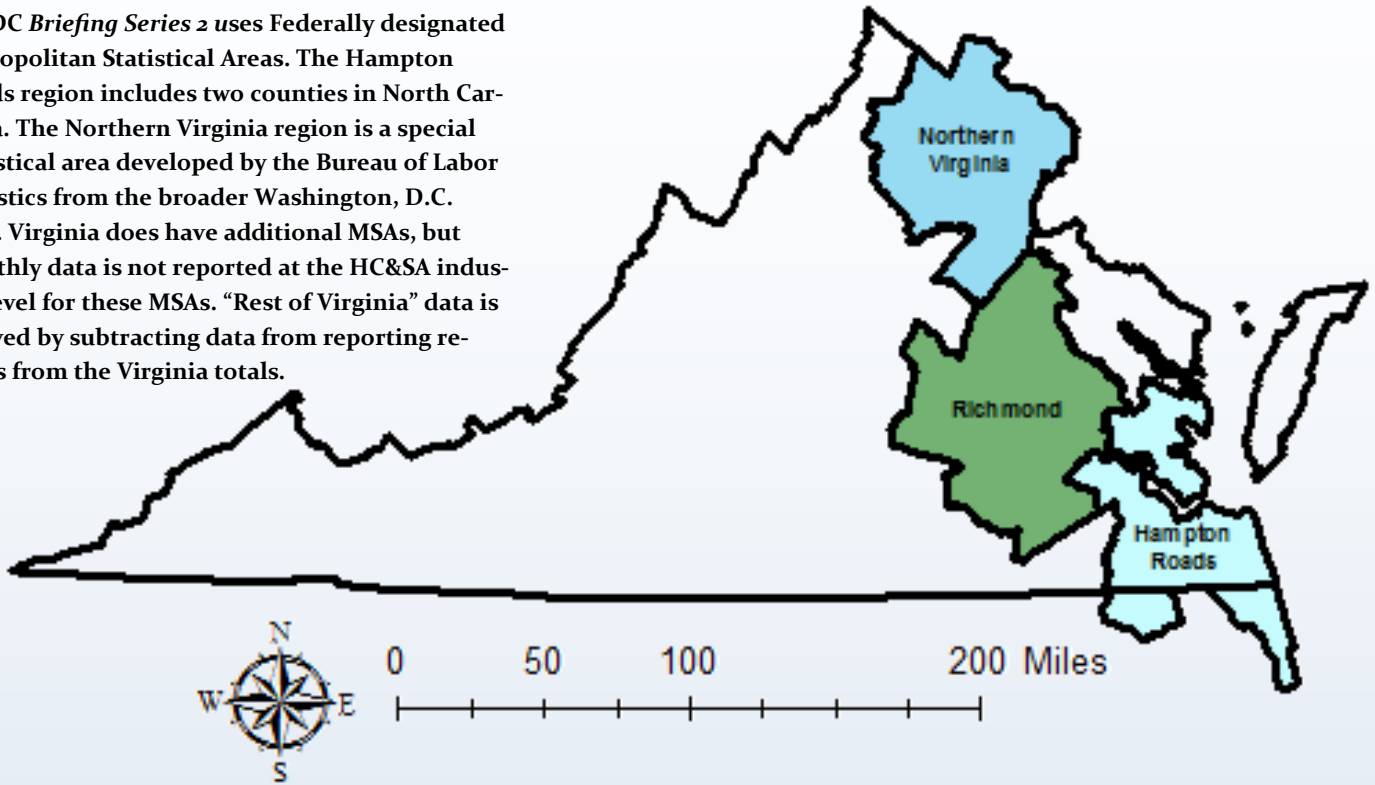
Social Assistance saw its 12-month employment growth rate moving average increase in February from 8.13% to 10.17%, thereby reaching its highest value since last September. With this increase, Social Assistance once again has a higher 12-month employment growth rate moving average than Nursing & Residential Care Facilities. This occurred despite the fact that Nursing & Residential Care Facilities also saw its moving average increase during the month from 8.38% to 9.96%. Meanwhile, the 12-month employment growth rate moving average for Hospitals fell from 4.88% to 4.77%, while the comparable moving average for Ambulatory Health Care Services declined from 2.97% to 2.25%.

Figure 5: 12-Month Moving Average, HC&SA Subsector Employment Growth Rate (Not Seasonally Adjusted).



Region Map

HWDC *Briefing Series 2* uses Federally designated Metropolitan Statistical Areas. The Hampton Roads region includes two counties in North Carolina. The Northern Virginia region is a special statistical area developed by the Bureau of Labor Statistics from the broader Washington, D.C. MSA. Virginia does have additional MSAs, but monthly data is not reported at the HC&SA industry level for these MSAs. “Rest of Virginia” data is derived by subtracting data from reporting regions from the Virginia totals.



Region Detail

Northern Virginia		Richmond		Hampton Roads	
<i>Northern Virginia, VA (Non-standard CES Area 94783)</i>		<i>Richmond, VA (MSA 40060)</i>		<i>Virginia Beach-Norfolk-Newport News, VA-NC (MSA 47260)</i>	
Counties:	Cities:	Counties:	Cities:	Counties:	Cities:
Arlington	Alexandria	Amelia	Colonial Heights	Gloucester	Chesapeake
Clarke	Fairfax	Caroline	Hopewell	Isle of Wight	Hampton
Culpeper	Falls Church	Charles City	Petersburg	James City	Newport News
Fairfax	Fredericksburg	Chesterfield	Richmond	Mathews	Norfolk
Fauquier	Manassas	Dinwiddie		Surry	Poquoson
Loudoun	Manassas Park	Goochland		York	Portsmouth
Prince William		Hanover			Suffolk
Rappahannock		Henrico		<i>Currituck, NC</i>	Virginia Beach
Spotsylvania		King William		<i>Gates, NC</i>	Williamsburg
Stafford		New Kent			
Warren		Powhatan			
		Prince George			
		Sussex			

Healthcare Workforce
Data Center

Perimeter Center
9960 Mayland Drive, Suite 300
Henrico, VA 23233-1463

Phone: (804) 597-4213
Fax: (804) 527-4434
E-mail: hwdc@dhp.virginia.gov
Website: www.dhp.virginia.gov/PublicResources/HealthcareWorkforceDataCenter

HWDC Staff:

Yetty Shobo, PhD <i>Director</i>	Barbara Hodgdon, PhD <i>Deputy Director</i>
Rajana Siva, MBA <i>Data Analyst</i>	Christopher Coyle, BA <i>Research Assistant</i>

Follow us on. . .

Tumblr: <http://vahwdc.tumblr.com/>

About the Data

Data in this report are from the U.S. Department of Labor, Bureau of Labor Statistics' Current Employment Statistics program. The CES program surveys about 143,000 businesses and government agencies monthly. Unless otherwise noted, this series uses data that are not seasonally adjusted. Seasonal variations related to weather, holidays, weekends, seasons and other predictable variations are apparent in the data. Short-term changes may be related to seasonal changes rather than underlying trends. Data from recent months is preliminary and subject to revision in future releases from the CES. Revisions will be reported in future editions of this series. Unless otherwise noted, the CES data presented in this series:

Includes:

- ◆ Data on employed individuals drawing a paycheck (payroll employees).
- ◆ All employees, regardless of role, occupation or hours worked.
- ◆ HC&SA employees in the private sector only.
- ◆ Persons employed by health professionals in private practice.
- ◆ Both government and private sector workers in nonfarm employment data.

Does not include:

- ◆ Self-employed workers or volunteers, including health professionals in private practice.
- ◆ HC&SA employees in the public sector (These are counted as government workers in monthly reports).
- ◆ Information on hours worked or the quality of employment.
- ◆ Government workers in HC&SA level data (Government workers, regardless of occupation and role, are classified as public sector employees).

The Department of Health Professions' Healthcare Workforce Data Center works to improve the data collection and measurement of Virginia's healthcare workforce through regular assessment of workforce supply and demand issues among the 80 professions and 350,000 practitioners licensed in Virginia by the DHP.

The HWDC collects data on Virginia's licensed health professionals through surveys completed during the online license renewal and application process. Survey results and data may be accessed on our website: www.dhp.virginia.gov/PublicResources/HealthcareWorkforceDataCenter/.

The HWDC also provides a series of Virginia Healthcare Workforce Briefs based on data collected by the U.S. Department of Labor's Bureau of Labor Statistics and the U.S. Department of Commerce's Bureau of Economic Analysis.

Virginia Healthcare Workforce Briefs:

Series 1: State & National Employment (Monthly)

Series 2: Virginia Regional & Sectoral Employment (Monthly)

Series 3: Income & Compensation (Quarterly)